

MHS Series

Compact 5-way switching joystick

MAIN FEATURES

- 4-way or 8-way with optional pushbutton validation
- Single pole off momentary contacts
- IP67 above panel sealed
- Optimized mechanical deflection for improved operator experience
- Center pushbutton may be actuated off center
- Potted flying leads



The MHS Series is a momentary 4-way or 8-way switching joystick with an optional pushbutton validation feature. This mini trim switch features an optimized travel angle and a center pushbutton that may be actuated throughout lever deflection. Featuring an integrated elastomer actuator and threaded body, the MHS provides IP67 above panel sealing and is ideal for remote control and joystick applications requiring a compact navigational control.

SPECIFICATIONS*

MECHANICAL (X & Y) AXIS	
Angular travel:	8° total (4° each direction from center)
Expected life:	3M
Centering:	Momentary (return to center)
Mass/weight:	13 grams
Acuation force:	350 +/- 40g
Recommended panel thickness	2-3mm
Housing:	M16 x 1mm thread
Mounting torque:	.3Nm applied to nut

*Specifications subject to change without notice

04252024mp



MHS Series

Compact 5-way switching joystick

SPECIFICATIONS

ELECTRICAL	
Electrical function:	SPST N.O.
Switching voltage:	50VDC max
Switching capacity:	1 watt
Switching current:	0.05 to 100 mA DC
Contact bounce:	<0.3ms make <0.6ms break
Electrical life:	3M

PUSHBUTTON SWITCH-HANDLE	
Electrical life:	3M
Electrical rating:	50mA @ 12VDC
Actuation force:	350 +/- 40g
Pushbutton travel:	.25mm

ENVIRONMENTAL	
Operating temperature:	-40°C +85°C
Storage temperature:	-40°C +85°C
Above panel sealing:	IP67

MATERIALS	
Plastic housing:	Mineral & glass filled nylon
Boots & actuators:	Silicone (with tear resistant additive)
Nut:	360 brass

04252024mp



MHS Series

Compact 5-way switching joystick

SPECIFICATIONS

TERMINATION

Multi-wire flying leads:

28awg, PVC



WIRE COLOR & DESCRIPTION

BLACK	GROUND & PUSHBUTTON COMMON
BLUE	X+ SWITCH
PINK	X- SWITCH
YELLOW	Y+ SWITCH
GRAY	Y- SWITCH
ORANGE	TOP SWITCH

04252024mp

Ruffy Controls, Inc.
3258 Grey Hawk Ct., Carlsbad, CA 92010
ruffycontrols.com

For more information: sales@ruffycontrols.com

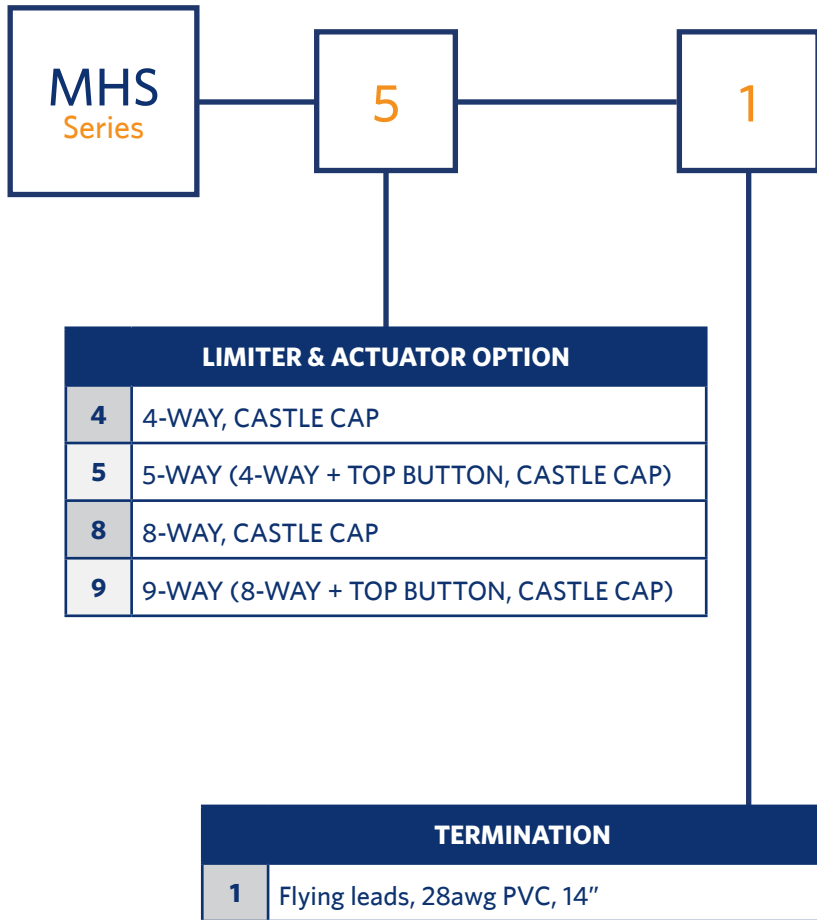
SCAN TO
ORDER TODAY



MHS Series

Compact 5-way switching joystick

MHS SERIES PART NUMBER CODE



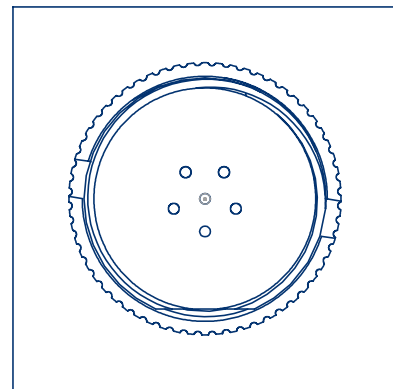
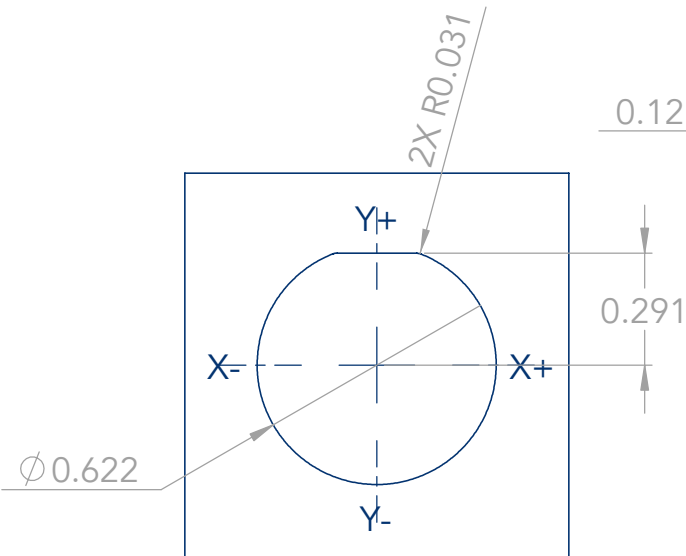
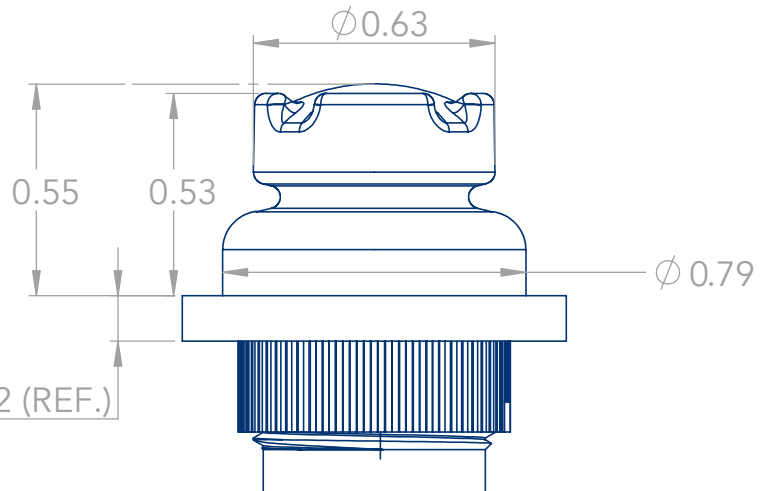
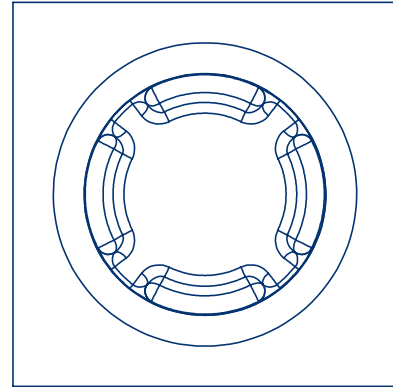
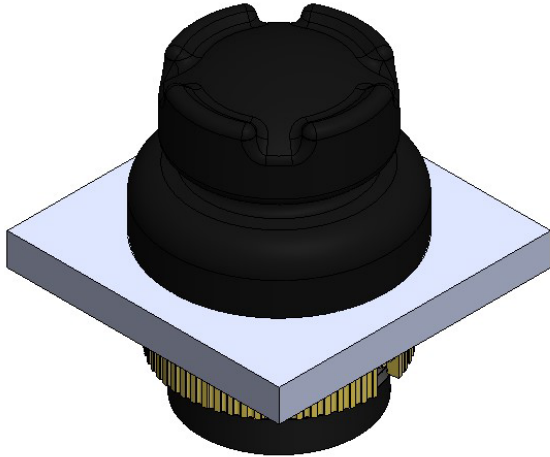
04252024mp



MHS Series

Compact 5-way switching joystick

PANEL CUTOUT DIMENSIONS



04252024mp

