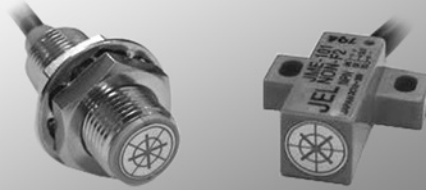


# PROXIMITY SWITCH

# JME

SERIES



## Features

- Cheaper price can be offered for using special proximity switching element & own detection circuit.
- LED installed
- Built-in surge absorb circuit
- Built-in reverse connection protective circuit
- Changing cable length, terminal processing can be arranged.

## Common Specification

Output method	NPN open collector output	
Power-supply voltage	DC10V~30V	
Current consumption	7mA(12V), 14mA(24V)	
Maximum output current	100mA(12V), 200mA(24V)	
Residual voltage	0.6V and below	
Operation system	NO	Detection object close the distance LOAD ON
	NC	Detection object close the distance LOAD OFF
Indication	NO	Detection object close the distance LED ON
	NC	Detection object close the distance LED OFF
Maximum operating frequency	1,000Hz	
Insulation resistance	100MΩ and above	
Dielectric strength voltage	AC1,500Vrms for 1 min.	
Operating temperature range	-20~70°C	
Connection diagram		

SENSOR

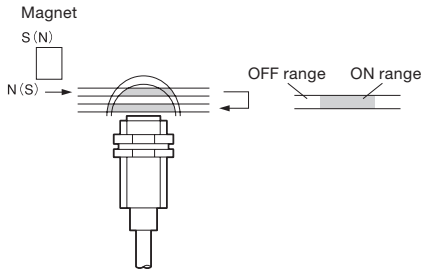
Magnetoresistive element type Proximity switch

JME series

※ Description in the catalogue is subject to change without notice. Please read the specifications thoroughly before using.  
 ※ Please contact JEL SYSTEM for further information.

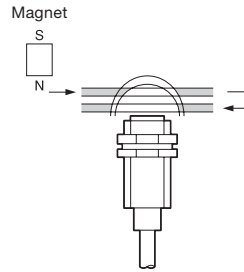
## Operation Method

### ■ NO type



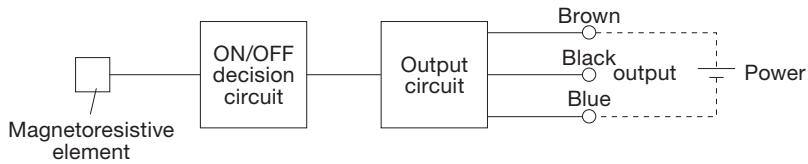
When the detection object (magnet or steel plate) close the distance, the output shall be "ON" status.

### ■ NC type



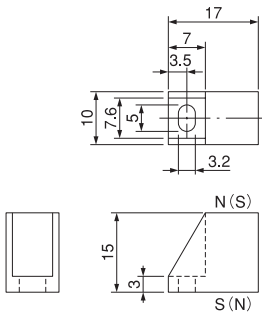
When the detection object (magnet or steel plate) close the distance, the output shall be "OFF" status.

## Equivalent Circuit

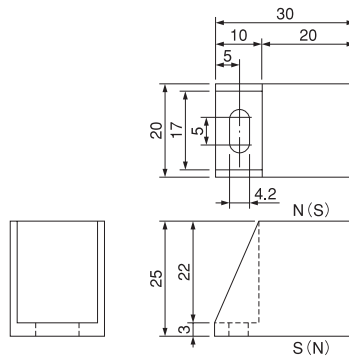


## Dimensions (mm)

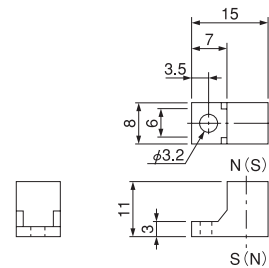
JM-102



JM-103



JM-104



※ Description in the catalogue is subject to change without notice. Please read the specifications thoroughly before using.  
 ※ Please contact JEL SYSTEM for further information.

# Cylindrical type

JME-001

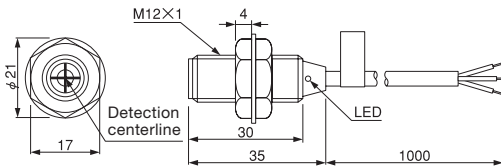


## Specifications

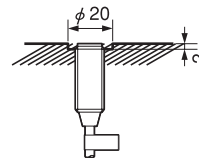
Model		JME-001
Power-supply voltage		DC10V~30V*
NO (Normal Open) type		NON-F2
NC (Normal Close) type		—
Standard operating distance		10mm
Setting distance		0~6mm
Hysteresis		0.5mm and below
Standard object detection		JM-102
Operating Distance	Variability	Within ±2mm of standard operating distance
	Temperature characteristics	Within ±20% under the Temperature of 20°C Temp. range : -20~70°C
	Voltage characteristics	Within ±20% under the voltage of 20V Voltage. range : DC10V~30V
Material of case		Case : heat-resistant ABS Screw : SPCC
Ingress protection		IP66

※ DC5V~10V type is also available

## Dimensions



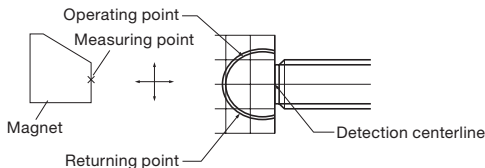
### Effects of steel plate



Operating distance is decreased if the distance is shorter than the above.

No reciprocal interference between switches.

## Range of detection



Operating point = shall be turn ON when the magnet close the switch.

Returning point = shall be turn OFF when the magnet separate the switch.

### Operating distance by each model (unit : mm)

Magnet model	JM-102	JM-103	JM-104
Operating distance	10	20	7
Setting distance	0~6	0~16	0~5

Operating distance = Maximum operating distance

Setting distance = Guaranteed operating distance

※ Description in the catalogue is subject to change without notice. Please read the specifications thoroughly before using.

※ Please contact JEL SYSTEM for further information.

# Square type

JME-101



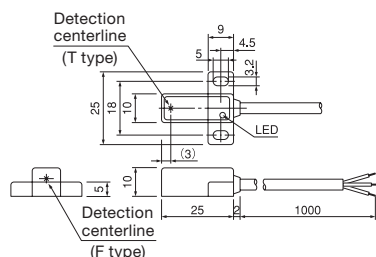
## Specifications

Model		JME-101
Power-supply voltage		DC10V~30V*1
NO (Normal Open) type		NON-F2*1
NC (Normal Close) type		NCN-T2*2
Standard operating distance		10mm
Setting distance		0~6mm
Hysteresis		0.5mm and below
Standard object detection		JM-104
Operating Distance	Variability	Within ±2mm of standard operating distance
	Temperature characteristics	Within ±20% under the Temperature of 20°C Temp. range : -20~70°C
	Voltage characteristics	Within ±20% under the voltage of 20V Voltage. range : DC10V~30V
Material of case		Case : heat-resistant ABS
Ingress protection		IP67

\*1 DC5V~10V type is also available

\*2 Both NO type and NC type are available

## Dimensions



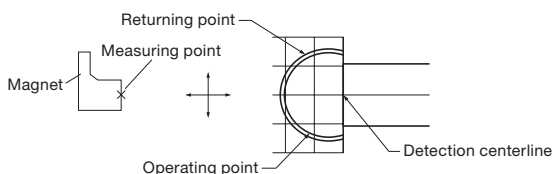
## Effects of steel plate



Operating distance is decreased if the distance is shorter than the above.

No reciprocal interference between switches.

## Range of detection



Operating point = shall be turn ON when the magnet close the switch.

Returning point = shall be turn OFF when the magnet separate the switch.

## Operating distance by each model (unit : mm)

Magnet model	JM-102	JM-103	JM-104
Operating distance	15	20	10
Setting distance	0~9	0~16	0~6

Operating distance = Maximum operating distance

Setting distance = Guaranteed operating distance

\* Description in the catalogue is subject to change without notice. Please read the specifications thoroughly before using.

\* Please contact JEL SYSTEM for further information.